

Artists-in-residence at the Moulin Jaune

**CALL FOR APPLICANTS FOR THE
2016 ARTISTIC RESIDENCY**

Requirements specification

Association Le Moulin Jaune en fêtes

1, sente du Moulin Nicole, 77580 Crecy la Chapelle FRANCE
moulin.jaune.slava@gmail.com / tel +33 / 6 07 45 01 56
www.lemoulinjaune.com

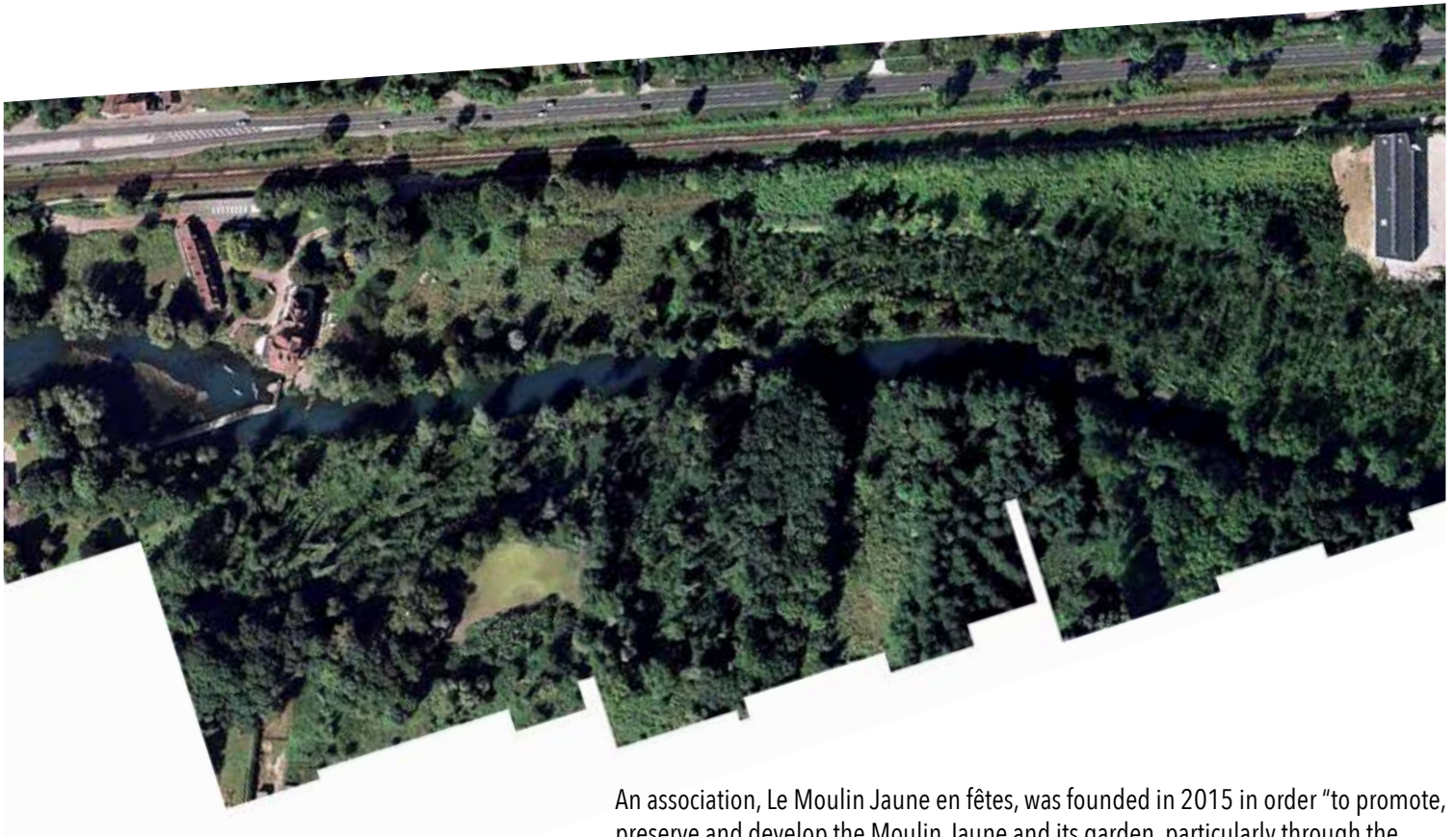


GENERAL CONTEXT

The Moulin Jaune is a permanently active and never-ending creative laboratory. The house, garden and daily life of this former windmill located less than an hour from Paris, are entirely devoted to the celebration of performance and imagination.

Its owner, the Russian clown Slava Polunin, founder of the Snowshow, Director of the Saint Petersburg State Circus, President of the Academy of Fools and the official ambassador of Andersen has, along with numerous artists and craftsmen, developed at the Moulin Jaune the experience of a journey where nature, creativity and daily life come together to create a festive and wonderful art of living. For its creativity and originality, the Moulin Jaune has been accredited with the French Ministry of Culture's label "Jardin remarquable".

In the heart of this garden located 40 km to the east of Paris on the banks of the River Grand Morin, several artistic interventions and experiments have been developing over time. For several years the garden has also regularly opened its doors to the public to welcome large enthusiastic family audiences for its fetes and festivals.



An association, Le Moulin Jaune en fêtes, was founded in 2015 in order "to promote, preserve and develop the Moulin Jaune and its garden, particularly through the organization of live performances, concerts, festivals, artistic and experimental creations, nature awareness activities, open days, conferences, visits, training, educational workshops and more."

Within this context and as from 2016, the association is calling for applications from artists from different fields to participate in an artistic residency of several days up to several weeks.

PARTICULARITIES OF THE MOULIN JAUNE

The association of Nature, Art and Daily life constitutes one of the particularities of the Moulin Jaune as a site for artistic experimentation and creative residencies.

The theme

These three *mammae* which nourish human relationships are the Moulin Jaune's creative instruments:

- Nature as a framework for intervention, source of inspiration and raw material.
- Art as the leitmotif of every activity.
- Daily life understood not as a routine but as an object for metamorphoses and an excuse for fun.

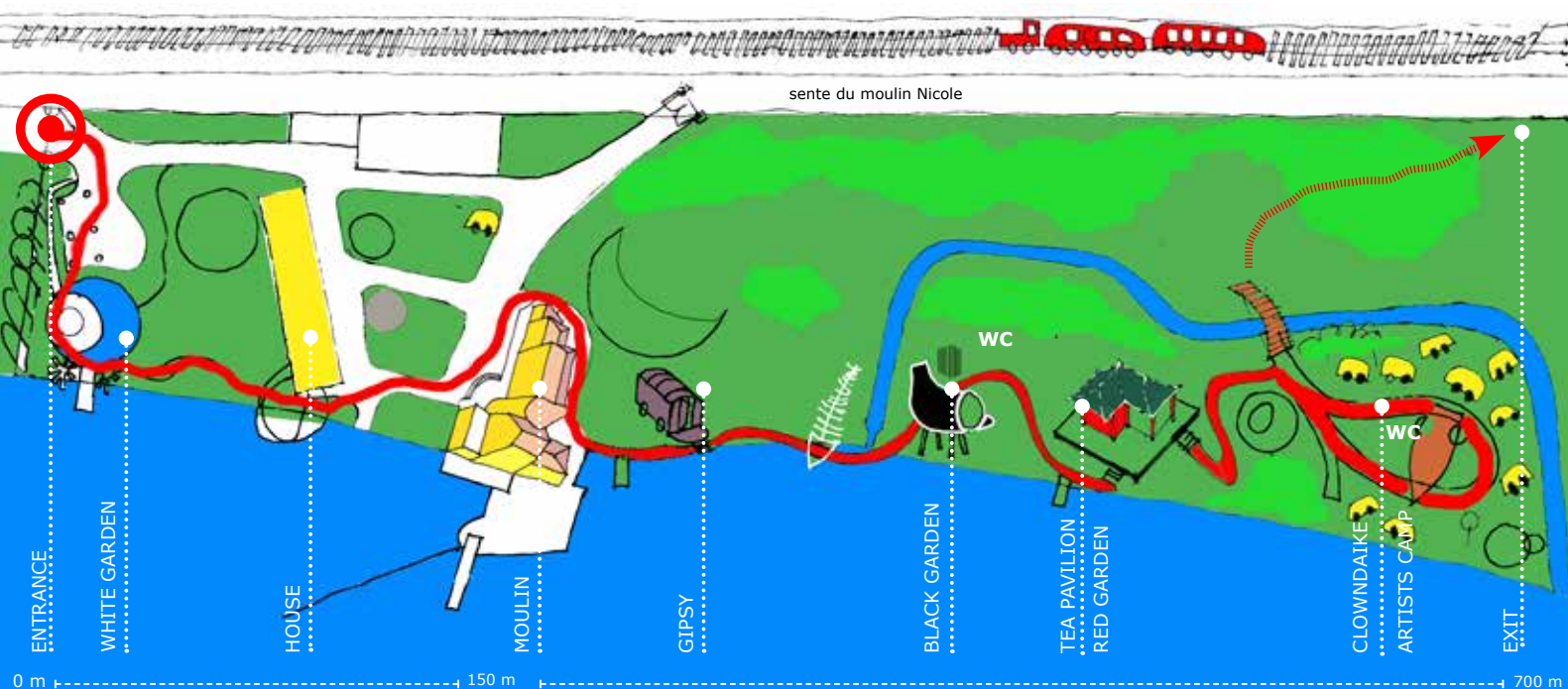
The location

The Moulin Jaune's garden is a partly wooded park covering about 3 hectares and bordering on 600 meters of the River Grand Morin. It includes gardens which have already been landscaped, transitional areas and others under development or lying fallow.

A wooden path crosses the entire garden linking the areas together and serving as a guide for the visitors' walks.

The principle existing gardens are:

- The white garden: this is a romantic garden symbolizing love and marriage. It features a small moon-shaped lake, areas for projecting images or films, a small English greenhouse and a pergola.
- The Moulin Jaune's courtyard is a vast cleared area between the mill and the house opening onto the Grand Morin dam. It features a play area for children, a pavilion with a stage on the roof and areas for resting and eating.
- The gipsy caravan garden is predominantly purple: a tribute to nomads, it symbolizes events in life, festivities and friendly encounters. At the back it opens onto an orchard and vegetable garden.
- The black garden dominated by stretched out trees, burned wood and logs represents childhood fears, hidden worlds and farewells. The man-made mist system heightens an already strange atmosphere.
- The Asian-inspired red garden is a place for contemplation and memories. In its centre stands a Korean tea pavilion where it is a pleasure to relax.
- Clowndaike, the up-turned nave at the end of the garden is a place for reunion which symbolizes paradise. Its vegetation includes trees and shrubs to be relished on site.



The creative workshops

Each of these gardens constitutes a workshop featuring one or several stages for live performance artists. They are free at any time and the majority is also equipped with electric sockets and a water point.

Each garden's atmosphere may be reinforced by the presence of new perennial or ephemeral creations.

The small architectural structures in each garden serving as elements of décor, accommodation and places of work are at the artists' disposal.

The intermediary areas between the gardens also constitute areas for creativity: designers and visual artists are encouraged to imagine doors, benches and seats along the path.

Lastly, the river provides the venue for a special intervention.

Depending on each artist's specialty, the costume reserves and the production workshops can be made available for the artists-in-resident.



ADMISSIBLE ARTISTS, PROFESSIONALS AND PROJECTS

Individual artists or small teams of artists as well as professionals in the following disciplines:

- Live performance artists and technicians: directors and choreographers, circus performers, dancers, musicians, singers, composers, actors, narrators, costume-makers...

- Visual artists: scenographers, designers, architects, painters, sculptors, ceramists and craftsmen in these disciplines.

- Artists in the fields of writing or image: authors, illustrators, graphic designers, photographers, videographers, cartoonists.

- Garden specialists in flora, fauna and garden planning; landscapers, gardeners, architects, ecologists, botanists.

- Artists of taste: cooks, bakers, ice-cream makers, culinary designers

This is not an exhaustive list: all artistic disciplines and associated techniques as well as all new forms of creativity constitute valid applications.

Multi-disciplinary teams are welcome.

All ages and nationalities are accepted.

The residency aims to accompany the artist in his creative process and for the Moulin Jaune's public to take part in a phase in the making of the artist's work.

The end result of the residency shall be mutually defined by the artist and the Moulin Jaune teams. The residency will thus constitute a step in the artist's personal work, his creative process or research, a performance, or the accomplishment of an ephemeral or perennial work destined for the Moulin Jaune or somewhere else.

The creation of a perennial work by the artist for the Moulin Jaune could be subject to a subsequent commission if the residency is insufficient for the work's completion.

THE PURPOSE OF THE RESIDENCY

The Moulin Jaune offers professionals and artists-in-residence predominantly outdoor creative areas, production workshops (partly under current development) and accommodation.

However, above all, it is an opportunity for the artist to confront his work with nature and the public.

1- The source of inspiration provided by nature in the accredited "Jardin Remarquable" is multiple. Through their capacity to transform and their permanent metamorphosis, the organic forms generated by nature are also inspirational. The artist is invited to develop a creative project on site which draws its inspiration from, and takes form in, the Moulin Jaune garden, the exact spot to be determined according to his choice and project.

2- The participative nature of the residency is one of the key elements of the project. The works must be conceived with an aim to associate the public either from the start or during their creation. The public is diverse: friends, partners or volunteers used to the Moulin Jaune, children from neighboring schools, students, adults in workshops and families. It can be involved in different stages in the making of the work (possibly its conception or other phases).

At the Moulin Jaune all the visitors must be actively involved: exchanging with all or some of the visitors during one of the garden's open days will therefore be on the agenda, either at a stage in the making of the work, at the end of the residency or in the months following the residency.

AGENDA

The residency will take place over a period spanning one to several weeks throughout the year. It will be organized to coincide with one of the days open to the public.

The theme of the 2016 program will concentrate on aspects of the seasons and the four elements. Each fete will also have 1 or 2 dominant colors, variations of which will be found in the different areas in the garden. The public will be invited to wear the same color(s).

Call for artistic projects will include one of the following events in 2016:

- Spring Fete on April 8th (schools), 9th and 10th:

Theme: Air / Dominant color: White, with pink and blue as additional colours

- Summer Fete on June 17th and 18th :

Theme: Water, Fire, Night and Light / Dominant colors : Yellow and Red

- Week of colours on July 4th to 10th :

Theme : sensitive touch / Dominant colors : all bright colors

- The Lavender Fete on July 9th and 10th :

Themes: Floral creations and Creative picnic / Dominant color: Violet

- Autumn Fete on October 1st and 2nd :

Theme: Earth, Food / Dominant color: Orange

- Winter Fete on January 13th and 14th 2017 :

Theme: Snow / Dominant colors: Green and Red

The garden is generally open to the public from midday to between 6 and 7pm.

In 2015 there were between 500 and 700 visitors per half day.

It could be envisaged opening the gardens to schools on the Friday for a "dress rehearsal".

TERMS AND CONDITIONS OF THE RESIDENCY

The individual or team of artists will be accommodated free of charge at the Moulin Jaune. At the end of the residency, each artist will ensure the cleaning of his accommodation or pay a global sum of 30€ towards the cost of cleaning.

Each artist will organize and take charge of his meals either individually or collectively, (a fully-equipped kitchen is available) or will pay the Association Le Moulin Jaune en fêtes 15€ per person and per day towards the cost of meals.

No fee will be paid by the Association Le Moulin Jaune en fêtes.

Nevertheless, in the event of the completion of a perennial work or a performance, a subsequent commission could be agreed in a separate contract. Likewise, if school workshops are undertaken during the residency, a specific allowance could be envisaged.

Depending on the project, a financial contribution towards the production of the work could be made.

All travel is at the artist's expense.

SELECTION

The choice of the artists is entirely left to the discretion of the *Association Le Moulin Jaune en fêtes*.

Criteria for selection focus on:

- The project's general artistic quality
- The project's technical and financial feasibility
- The quality of the work's capacity for public participation in its making during an open day.

It is possible to arrange a visit prior to the residency for more specifications.

APPLICATIONS

Candidates must send a free format application file written in French, English or Russian including:

- **A letter of application (1-2 pages) defining:**

- The outline of the project: a written presentation and/or illustrations, sketches, photos
- For an artistic team: the members, their functions, (as well as the number of beds needed to accommodate the team bearing in mind that tents and caravans are accepted on site).
- The ideal length of time for the residency and the planned schedule (several possible options).

- **The project's formulation in detail including:**

- The proposed course of action (personal research or creative process for a specific work)
- The result anticipated at the end of the residency
- The areas in the garden to be reserved for the project
- The expected production budget, sponsors and possible partners
- Expectations in terms of input from others, advice, production (equipment, materials, production logistics) to be provided by the Moulin Jaune
- The involvement procedure and proposed presentation of the work on the garden's public open day.

- **The candidate's (or candidates') references**

- **The artist's legal status and when appropriate, his MDA number (social security scheme for artists in France) and SIRET number (business registration number).**

The application should be sent:

- Either by email in PDF to moulin.jaune.slava@gmail.com
- Or by the post to:

Le Moulin Jaune en fêtes – artists-in-residence program
1 sente du Moulin Nicole
77580 Crécy-la-Chapelle
France

For the Air Fiest (April 2016), please send applications before March 10.

Please contact Sara Lubtchansky for any further information in English or French:

moulin.jaune.slava@gmail.com

tel +33 / 6 07 45 01 56

Please contact Anna Hannikainen for any further information in Russian :

annahannik@gmail.com

tel +33 / 6 76 33 74 55

**Further information on the Moulin Jaune website (French or Russian so far) :
www.lemoulinjaune.com**